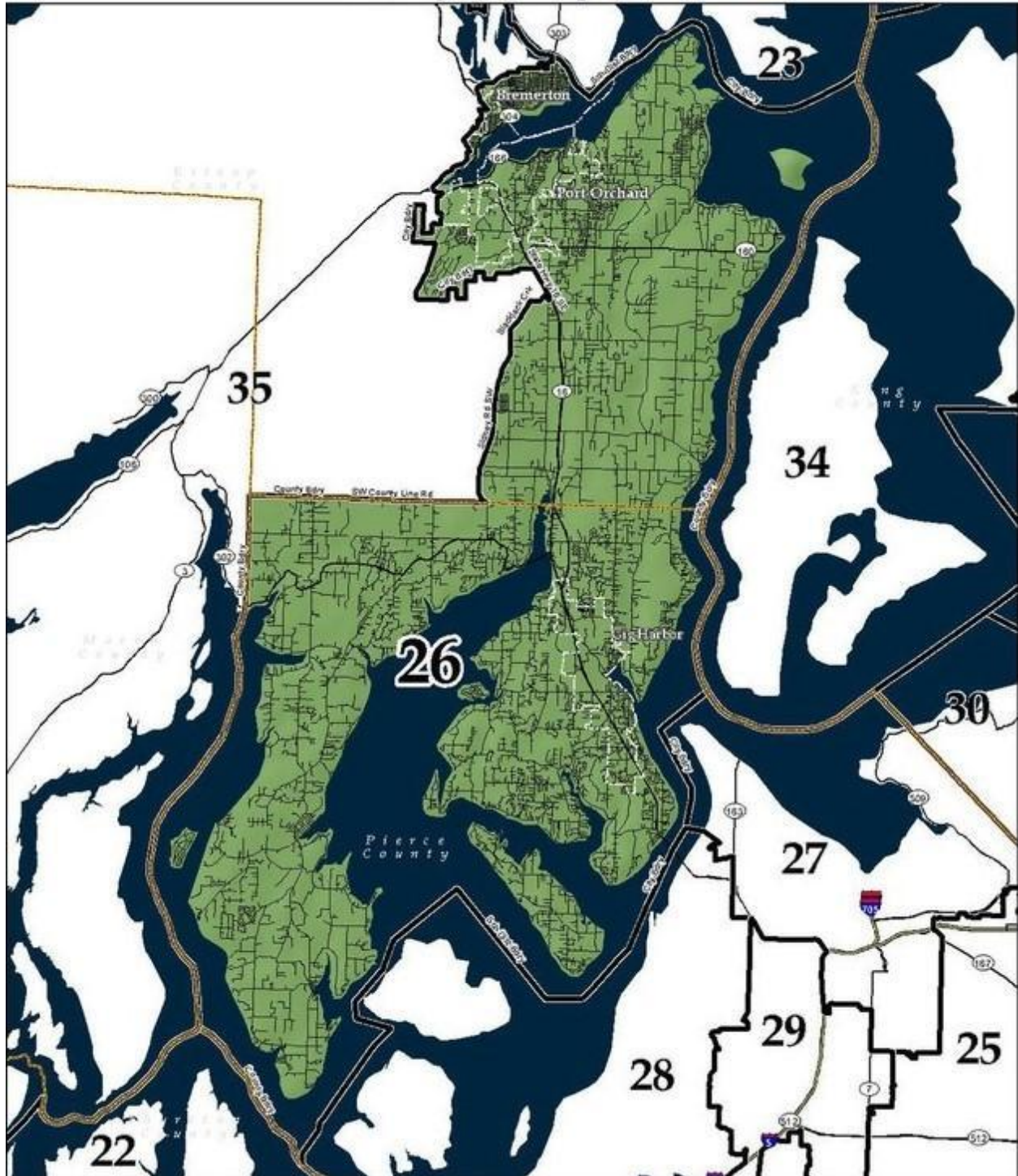


## 26<sup>TH</sup> LEGISLATIVE DISTRICT



DEMOCRATS

## Congressional District 6



## Political Organization

US Senators: Patty Murray (D) Maria Cantwell (D)

US Representative 6<sup>th</sup> Congressional District: Derek Kilmer (D)

26<sup>th</sup> LD: Sen. Emily Randall (D), Rep. Spencer Hutchins (R), Michelle Caldier ®

Washington State Democratic Party: Shasti Conrad, Chair

Kitsap County Democratic Party: Johanna “Hannie” Baxter, Chair

Pierce County Democratic Party: Judy Smirga, Chair

### 26<sup>th</sup> Legislative District Democratic Party:

Thomas Slyter, Chair

Luellen Lucid, Vice Chair, Pierce County

Emerald Lessley, Vice Chair, Kitsap County

Madysen McLain, State Committee Member

Ray Shjerven, State Committee Member

Nora Eckstein (Sekowski), Secretary

Rosanne Rappazini, Treasurer

Angela Sisney, Membership Chair

Kara Aley, PCO Chair

Catherine Jordan, At Large, Pierce County

Frank Dacca, At Large, Pierce County

Alex Davidson, At Large, Pierce County

Leigh Brumberg, At Large, Pierce County

Dianna Eversole, At Large, Kitsap County

Melissa Shumake, At Large, Kitsap County

Myrna Robinson, At Large, Kitsap County

Brenda McCormick, At Large, Kitsap County

## Precinct Committee Officer / Leader

### The Backbone of our Organization!

**Elected PCO:** On state ballot primaries every even year. Must file to run for position. Must live in their precinct. Can vote on all issues to include filling partisan vacancies (such as a Sheriff's vacancy), 26<sup>th</sup> LD resolutions, etc. Only newly elected PCOs may vote on Executive board members at biennial reorganization meetings. May run for executive board positions.

**Appointed PCO:** Volunteers can be appointed outside of the elections process to open precincts. Must be signed off by the LD chair then by the respective County chair. Terms end before the reorganization meeting therefore cannot vote for Executive board members at biennial reorganization meeting. May run for Executive board positions.

In residence: They live in the precinct they are appointed to.

Non-resident: They are appointed to a precinct they do not live in.

NOTE: Kitsap Co refers to appointed PCOs as Precinct Leaders and not Committee Officers so as not to conflict with RCW terminology.

## Members

### The Heart of our Organization

Currently paid members may run for Executive Board and nominate persons for positions at biennial reorganization meetings. Also currently paid members may vote on organization resolutions and by-laws changes.

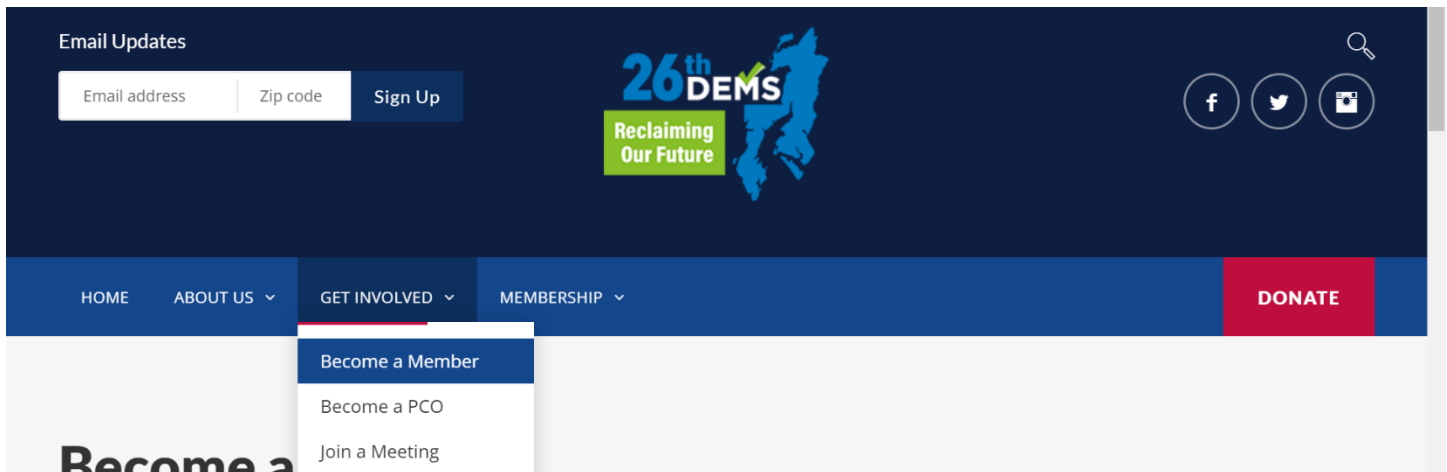
See next page for how to join!

Dues: \$25 – Regular, \$40/couple, \$10 – Lower Income, Senior, or student. Elected PCOs are not required to pay dues. A donation doesn't make you a member unless it's monthly or \$100/year. \$200/ 2 years.

Pay at 26ld.org or at monthly meetings.



Visit our website: <https://26d.org/wp/>



You can pay for your membership online:

[PAY YOUR MEMBERSHIP DUES ONLINE](#)

Download the application and bring to a meeting:

[DOWNLOAD AND BRING TO MEETING](#)

## Next Steps: Stay Connected

Once you become a member you'll want to come to our meetings and stay connected. Join our mailing list or find us on these social platforms.

[JOIN MAILING LIST](#)

[FACEBOOK PUBLIC PAGE](#)

Create an Act Blue account: Go to <https://secure.actblue.com/>

ActBlue

[My ActBlue Express](#)

Features Blog

The banner features a background image of a person's hand holding a tablet. The tablet screen displays the ActBlue Express Donate page, showing a 'COLOR OF CHANGE' campaign for 'Medicaid' with various donation options like '\$25', '\$50', '\$100', '\$250', and '\$1,000'. A large blue box in the top right corner of the banner displays the total amount raised: '\$11,706,633,916' with the text 'RAISED ONLINE SINCE 2004' below it. The main text on the left reads 'Flexible &amp; free fundraising tools to harness the power of the grassroots'. Below this is an orange 'Get set up' button and the text 'No commitment needed'.